

# Small Learning Communities

**Kearney High School  
Future Educational Programming**

<http://goo.gl/CjRwxh>

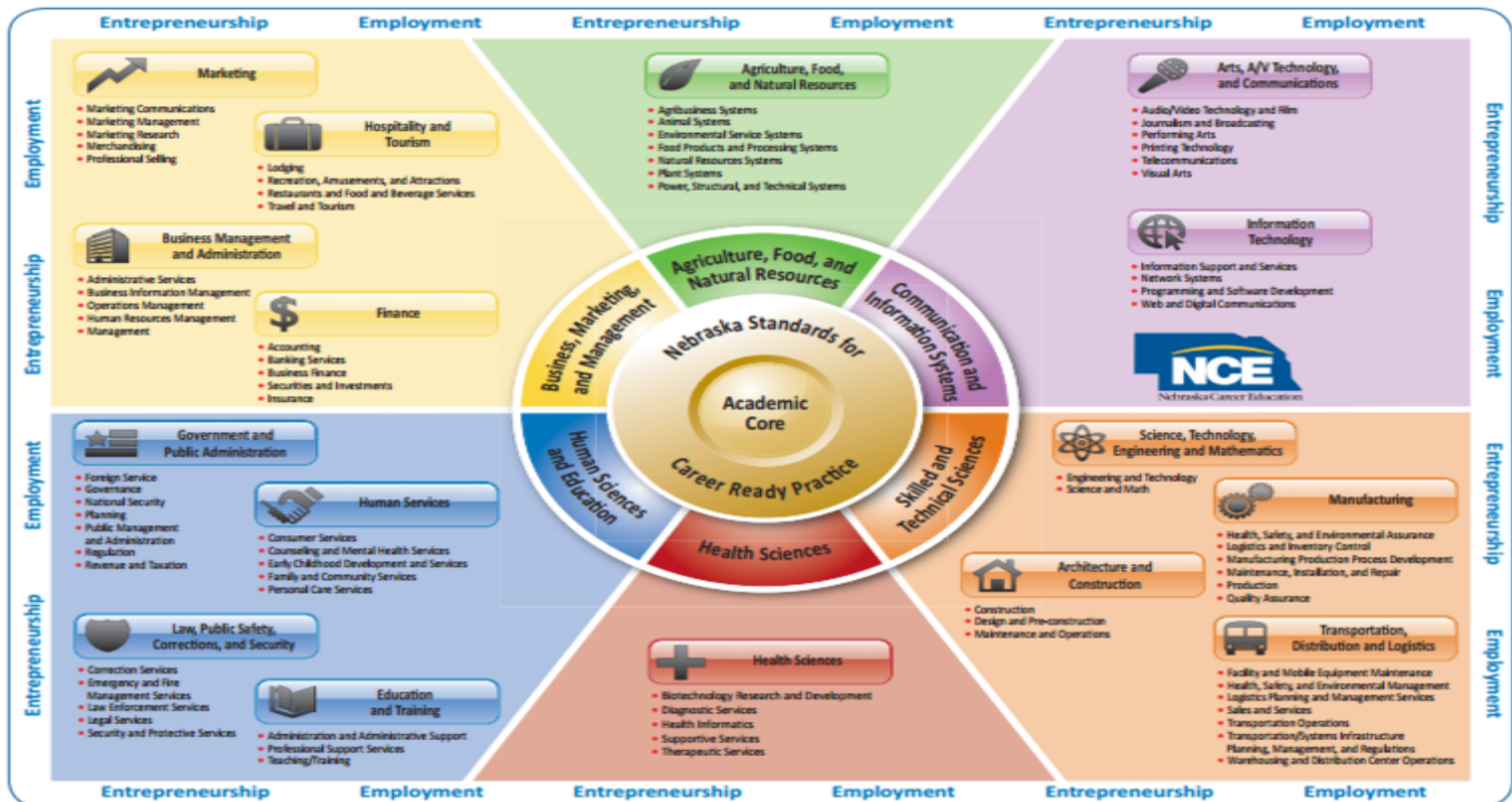


# VISION

1. **ALL** students should be college, career, and life ready.
2. **ALL** students should be engaged in their own education.
3. **ALL** teachers should make coursework rigorous, relevant, and relational.

# Small Learning Communities (SLCs)

- Small school feel
- Community Partnerships
- Nebraska Career Education Model



Adapted from NASDCTEC/NCTEF Career Clusters: Pathways to College and Career Readiness. Developed by the Nebraska Department of Education 2012.

# Kearney High SLCs

1. Core Academy SLC
2. Health Sciences
3. Skilled & Technical Sciences
4. Business, Marketing, & Management
5. Human Sciences & Education
6. Fine & Performing Arts

# reVisions Grant

- **Community Meetings**

- Gather community representatives from each career cluster to discuss economic needs

- **School Tours**

- Evie Garrett Dennis E12 Campus
- Denver School of Science & Technology
- Garden City High School

Check out <http://goo.gl/nePNBf> on your computer to see where we have traveled

- **Work Time**

- Provide 20 teachers with 25 hours of paid work time to develop framework and make recommendations for how to proceed.

# How Do We Get There?

- Analyze daily schedule for efficiency
- Review curriculum offerings & develop programs of study
- Define Core Academy SLC
- Research Student Exit Projects/Internships

# **reVisions II Grant**

**Career Pathways Coordinator**

**Advisory Teams**

**Continuous School Improvement Process**



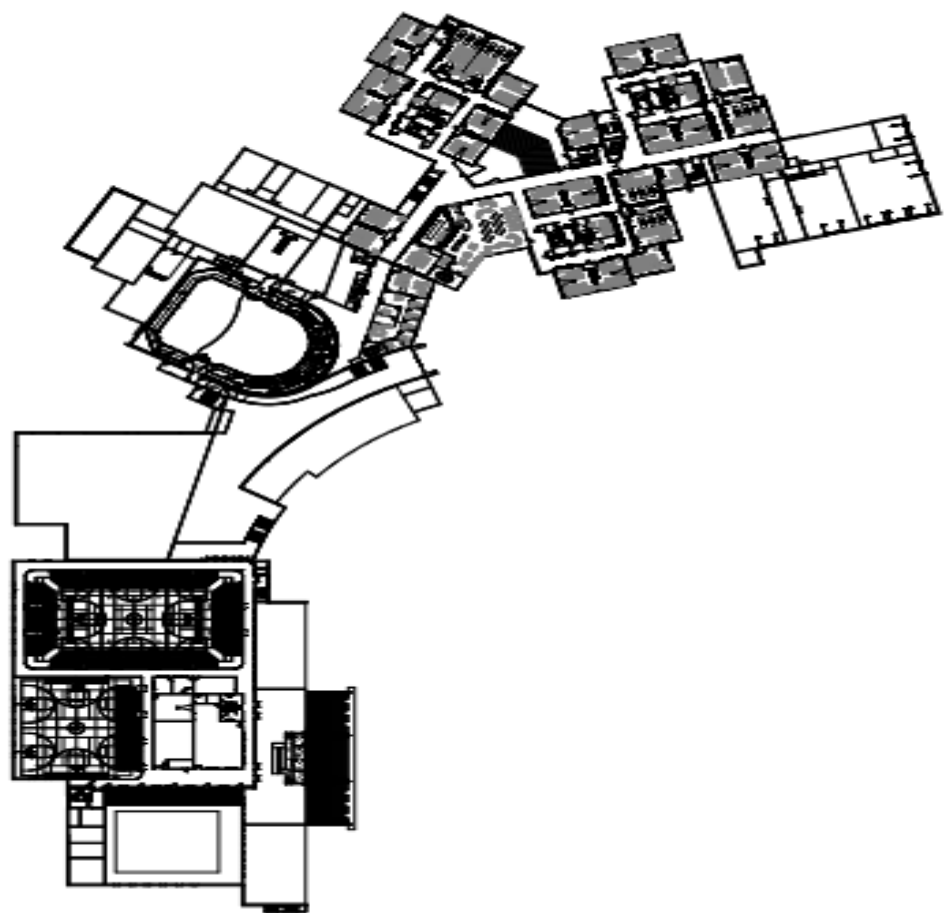
Q&A

You have

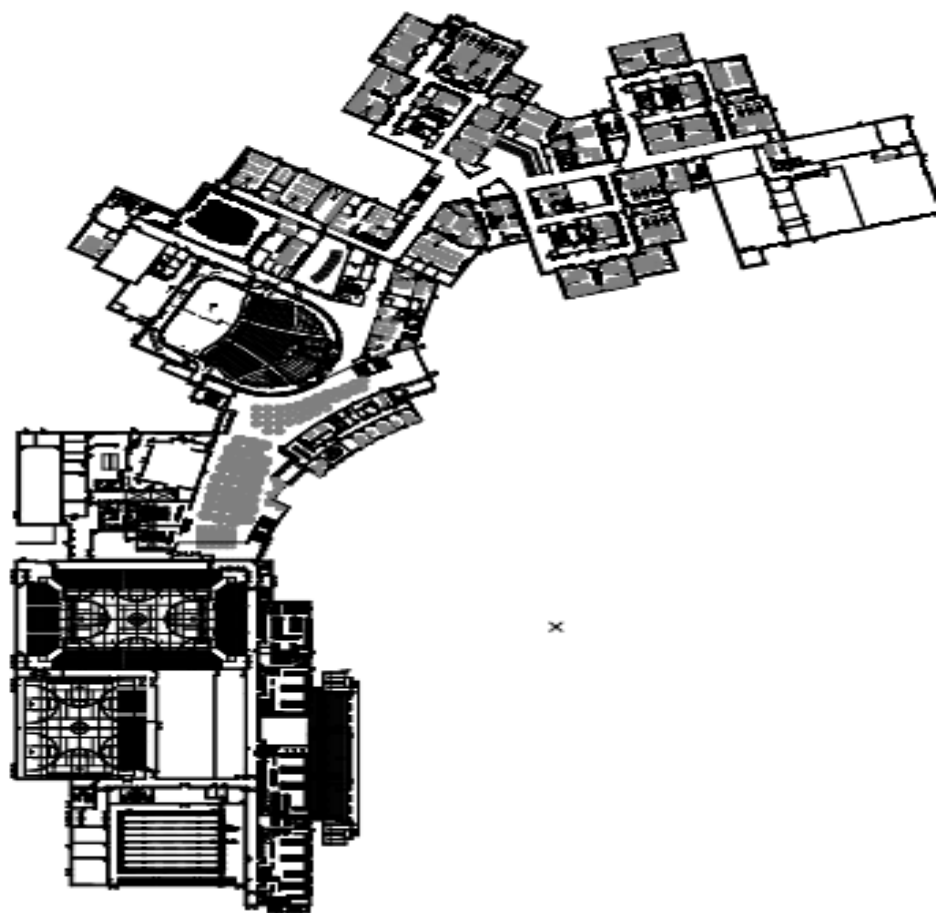
Questions

We have

Answers



2.02 FLOOR PLAN - SECOND FLOOR OVERALL



2.03 FLOOR PLAN - FIRST FLOOR OVERALL







